

UNLEASHING THE GRID

ENERGY DOMINANCE FOR NATIONAL DEFENSE



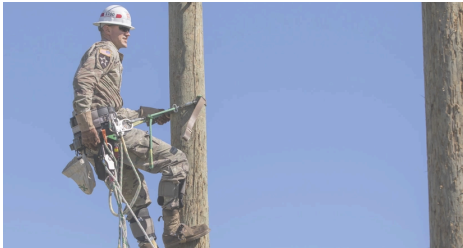
“Unleashing The Grid: Energy Dominance For National Defense” presents a framework for defense stakeholders to understand grid risk in their regions and explore the national defense opportunities presented by transmission infrastructure expansion.



WHY IS TRANSMISSION IMPORTANT TO NATIONAL DEFENSE?

Electricity underpins national defense.

Military installations, defense communities, and defense manufacturing rely almost entirely on the grid. A strong electricity transmission backbone assures abundant energy for national defense.



WHAT ABILITY DOES THE DEPARTMENT OF DEFENSE (DOD) HAVE TO INFLUENCE GRID RESILIENCE?

Energy resilience and security are at the core of defense energy policy.

DoD is increasingly engaging with utility and community partners on readiness strategies, defense critical electric infrastructure, and bulk-power system resilience.



WHAT SHOULD TRANSMISSION PLANNING FOR NATIONAL DEFENSE ACCOMPLISH?

Increase the warfighting and homeland defense capabilities of the military.

Transmission expansion should prioritize energy assurance to critical DoD missions, incorporate DoD energy loads into planning, identify and efficiently connect growing missions and facilities, and provide cost-effective reliability.



HOW CAN DEFENSE STAKEHOLDERS ASSESS THE NEED FOR TRANSMISSION EXPANSION?

Defense stakeholders must understand the risks to the grid supporting them.

Defense stakeholders can utilize public data related to bulk-power system reliability, projected electricity demand growth, changes in the electricity mix, and recent studies of potential transmission expansion.



WHAT ARE THE REGULATORY PROCESSES AND POLICY AUTHORITIES THAT GOVERN TRANSMISSION?

Policies and processes are at the state, regional, and federal levels.

Under President Trump's Executive Order, “Declaring a National Energy Emergency,” the Department of Energy (DOE) will identify and exercise all lawful authorities to strengthen the U.S. grid, including the backbone of our grid, our transmission system.



ASSOCIATION OF
**DEFENSE
COMMUNITIES**



CONVERGE
STRATEGIES

Aligning national defense and electricity system expansion requires a substantial shift in the way critical infrastructure in the U.S. is planned, constructed, and operated.